

Privacy Respecting Secure Digital Exchange.

Share Analysis. Not Data.

Privacy Respecting ANALYSIS of distributed patient health DATA (www.PRANADATA.nl)



COMMIT/

COMMIT is a public-private research community solving grand challenges in information and communication science shaping tomorrow's society

How to set-up secure digital environments for data handling and analysis?



Context: personal data is stored increasingly in personal storage in the cloud



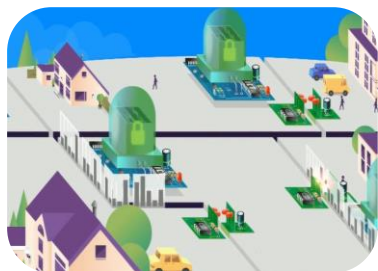
Problem: analysis still requires a central party that can access the data.



Solution: Develop technologies on personal data spaces of the future.

Personal data spaces should not rely on a third party with access to the raw data.

Additional success factors are transparency, user control, and feedback (PRANA user study).



Personal Health train: How to bring your research to the data?



Secure Patient Matcher: How to keep your data encrypted during the analysis?



User Study: What do patients/end-users think of our privacy technologies?



White paper: Share analysis, Not Data

Interested?

Wessel.Kraaij@TNO.nl

Jessica.Doorn@TNO.nl